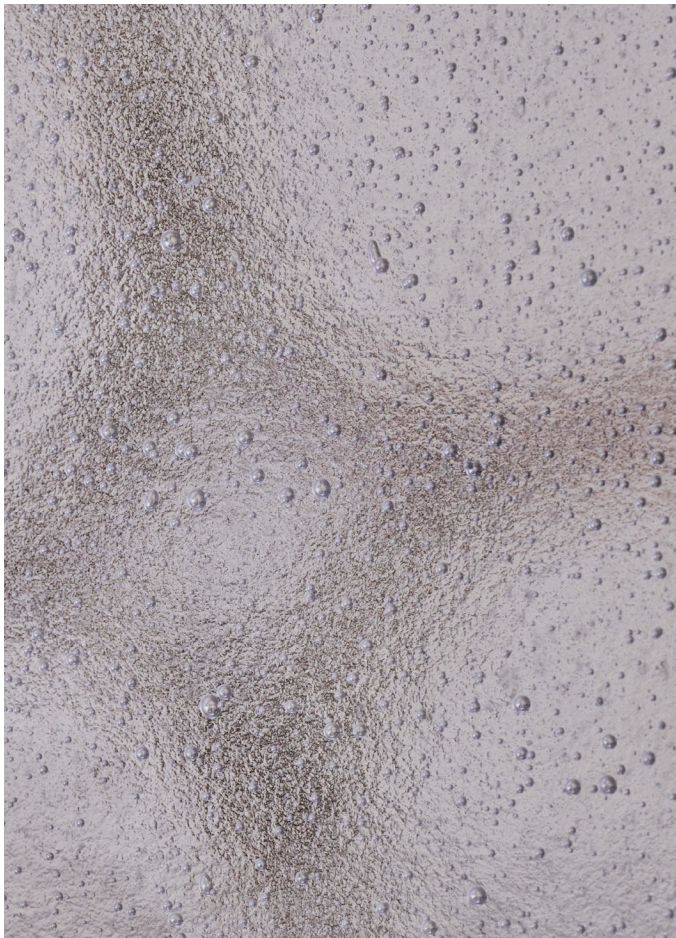




JOHN POMP

STITES CIRCULAR COCKTAIL TABLE



STITES CIRCULAR COCKTAIL TABLE

MODEL NO: JPSSCT-01

Hand-cast, clear glass crystal table top with constellation inspired bubble pattern top on satin pale bronze metal base with hand-turned wood legs

AS SHOWN (IN PHOTO)

Metal - satin pale bronze
Wood - dark walnut

DIMENSIONS

Overall - 45"W x 16.5"H

AVAILABLE FINISHES

Glass - hand-poured, clear glass crystal with constellation inspired bubble pattern

Metal - satin pale bronze

Wood - white ash, medium walnut or dark walnut

ADDITIONAL NOTES

Lead time is 12-14 weeks.

Includes studio mark.

